

CLIMATE CHANGE

MYTH vs FACT



MYTH

The global average temperature is dropping. Some warmer countries even experience snow storms.

FACT

Global average temperature is rising. Climate change can increase the intensity and frequency of extreme weather.

The 3 Hottest Years in Recorded History

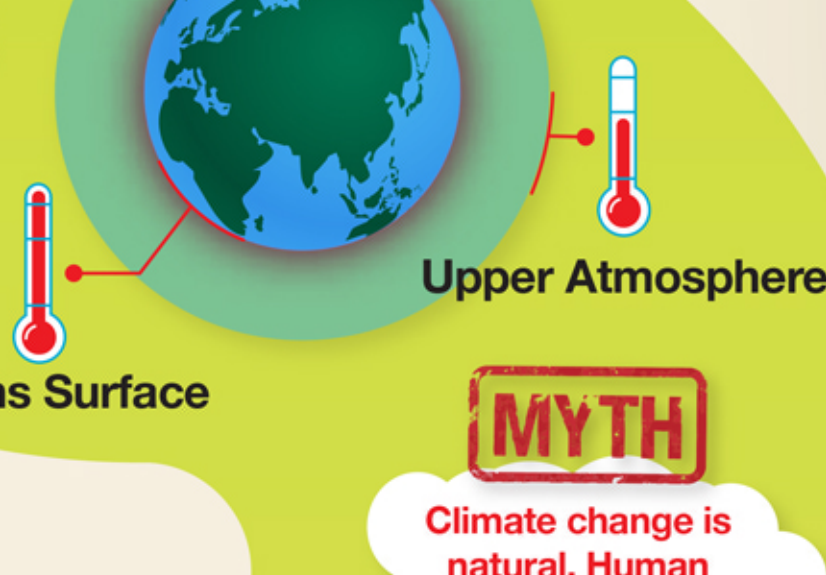


MYTH

The sun is the main cause of climate change.

FACT

If this is so, the upper atmosphere would be as warm as the earth's surface. The opposite is true. Changes in the sun's activity cannot explain the rise in global temperatures in recent decades.



MYTH

Climate change is natural. Human activity cannot be making it worse.

FACT

Humans have released tremendous amounts of CO₂ from burning fossil fuels for energy. More CO₂ means more heat gets trapped, causing climate change.



1800s



Present Day



MYTH

Freak weather events have always occurred. Intense storms like Hurricane Katrina and heat waves are normal.

FACT

Scientists have observed an increase in extreme weather events in a number of regions since 1950.

1960s



Present Day



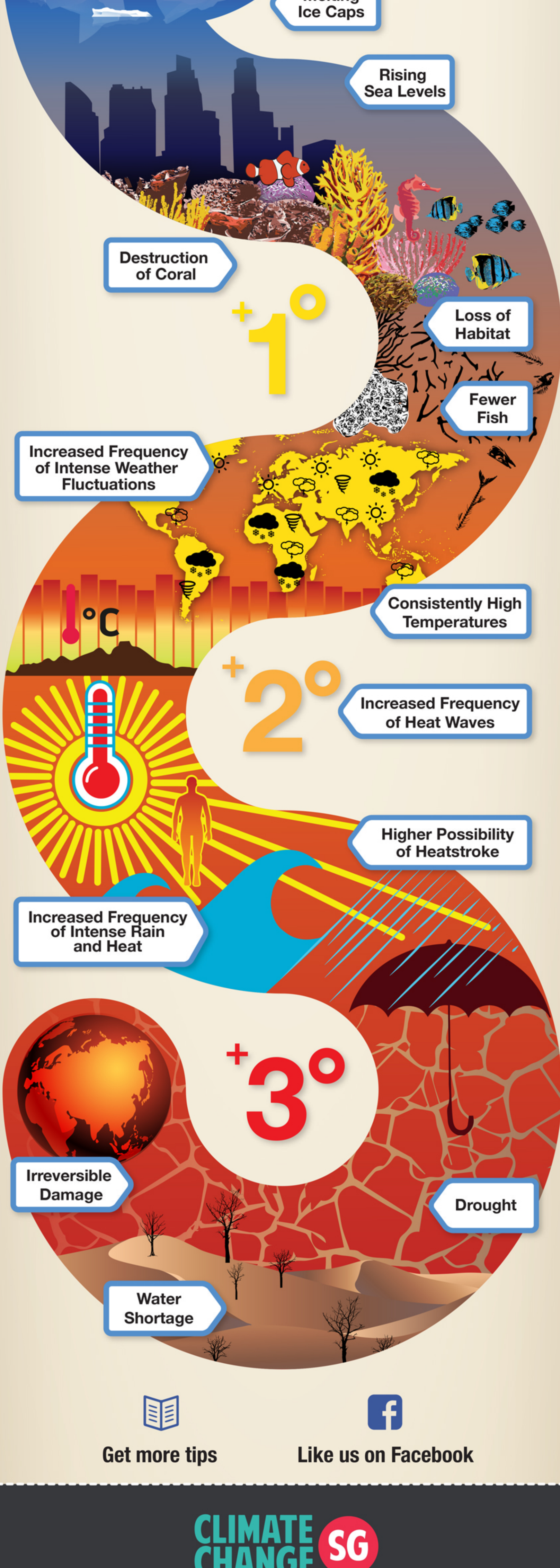
MYTH

A small change in temperature makes no difference.

FACT

One degree may sound like a small amount, but small changes in temperature can correspond to enormous changes in the environment.

What happens if the temperatures keep rising?



Get more tips



Like us on Facebook



Helping Singapore change with the climate.

Established in 2010, the National Climate Change Secretariat (NCCS) plans and coordinates Singapore's policies and strategies to address climate change.

www.nccs.gov.sg

Sources:

<http://www.climatecentral.org/news/astonishing-arctic-sea-ice-melt-may-lead-to-extreme-winter-weather-14989>

<http://www.nasa.gov/topics/earth/features/coldweather-2009.html>

<http://www.wri.org/blog/2013/09/new-report-connects-2012-extreme-weather-events-human-caused-climate-change>

<http://ipcc-wg2.gov/SREX/report/>

<http://www.ncdc.noaa.gov/>

<http://edition.cnn.com/2012/07/10/world/unusual-world-weather/>

<http://realitydrop.org/#myths>