

SUSTAINABLE SINGAPORE BLUEPRINT

A LOOK BACK AT 2015

The Sustainable Singapore Blueprint (SSB) 2015 maps out strategies for Singapore's sustainable development. It is guided by a collective vision of a Liveable and Endearing Home, a Vibrant and Sustainable City and an Active and Gracious Community.

To achieve the targets and plans laid out in the SSB, individuals, communities, companies and Government agencies need to work together to make Singapore an exceptional home for many generations to come.



AN ACTIVE AND GRACIOUS COMMUNITY



THE RAIL CORRIDOR

An inspired and extraordinary community space

- 24 km-long 'green corridor' that spans from Woodlands to the former Tanjong Pagar Railway Station
- Used mainly as a recreational space by outdoor enthusiasts
- URA engaged the community extensively on their aspirations for the Rail Corridor



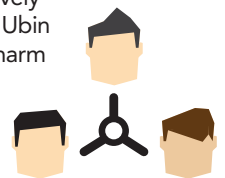
- Design professionals invited to develop a Concept Master Plan and Concept Proposals
- Exhibition on the winning proposals will be held at the URA Centre in November 2015



THE UBIN PROJECT

Enhancing rustic and natural charm, creating more leisure and education opportunities

- Government agencies collected ideas from Singaporeans on how we can sensitively enhance the natural environment of Ubin and protect its heritage and rustic charm
- Friends of Ubin Network was formed and developed a vision



COMMUNITY IN BLOOM GARDENS



Gardening movement by the community

- Residents of all ages coming together to grow plants, edibles and herbs
- Almost **1,000** community gardens
- First Community Garden Festival held in September 2015



Sustainable
Singapore

“ECO-SMART” ENDEARING TOWNS

SMART AND SUSTAINABLE TOWNS

Embedding smart technologies and eco-friendly features into towns and homes

PUNGGOL NORTHSHORE



- Urban environmental modelling for a comfortable and sustainable living environment
- Smart lighting with sensors
- Smart Pneumatic Waste Conveyance System
- Smart enabled homes
- Smart fans
- Smart irrigation



SAVING ENERGY

Mandatory Energy Labelling Scheme,
Minimum Energy Performance
Standards for lamps

GREEN AND BLUE SPACES

Creating accessible green and blue spaces for people to live, work and play

ACTIVE, BEAUTIFUL, CLEAN WATERS (ABC WATERS) PROJECTS

- Bringing people closer to water to appreciate it
- To date, 4 projects have been launched (Rochor Canal, Sg Api Api, Sg Tampines and Kallang River (Potong Pasir)) and another 2 projects (at Siglap Canal) have been completed in 2015

SINGAPORE BOTANIC GARDENS

GREEN SPACES

- **Singapore Botanic Gardens** – Singapore’s first UNESCO World Heritage Site
- Launched **Coney Island Park** in Oct 2015
- **Amount of park space:**
From **4,040 ha** (2013) to **4,100 ha** (2015 as at 31 Mar)
TARGET FOR 2030: Park provision ratio of 0.8 ha/1,000 population

NATURE WAYS

- Planting green corridors with biodiversity in urban spaces
- **Length of Nature Ways:**
From **21 km** (2013) to **61 km** (2015 as at 30 Sep)
TARGET FOR 2030: 180 km

PARK CONNECTOR NETWORK

- Completion of **36km** long **Central Urban Loop**
- **Length of Park Connectors:**
From **216 km** (2013) to **300 km** (2015 as at 30 Sep)
TARGET FOR 2030: 400 km





Sustainable Singapore

A "CAR-LITE" SINGAPORE



ACTIVE MOBILITY PLAN

Promoting cycling as a complement to public transport

EXPAND THE CYCLING NETWORK

- Intra-town cycling networks to provide first-and-last mile connectivity to major transport nodes and key amenities
- Inter-town cycling paths connecting towns to the city
- Length of cycling paths:

From **233 km** (2013) to **345 km** (2015 as at 30 Sep)

TARGET FOR 2030: MORE THAN 700KM

BICYCLE SHARING SCHEMES

- Pilot schemes in Jurong Lake District, Tampines, Pasir Ris and Marina Bay progressively from 2017, subject to interest from potential service providers

DEVELOP CLEAR AND CONSISTENT SET OF RULES AND CODE OF CONDUCT FOR SAFE AND HARMONIOUS USE OF PATHS

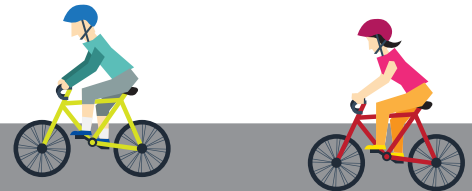
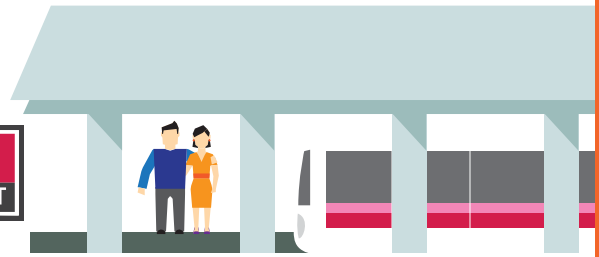


PUBLIC TRANSPORT

Improving our public transport experience

ENHANCEMENTS TO OUR RAIL AND BUS NETWORKS

- About **750 buses** added through the Bus Service Enhancement Programme by end-2015
- Almost **6 in 10 households** within **10 minutes'** walk to a MRT
- Second phase of Downtown Line (16.6km, and 12 stations from Bukit Panjang to Bugis) to open on 27 Dec 2015



PEDESTRIAN-FRIENDLY STREETS

Encouraging walking as a healthy and convenient way to get around

MORE 'CAR-LITE' PUBLIC SPACES

- Streets for People programme launched to transform streets into meaningful public spaces
- Periodic road closures e.g. Orchard Road, Club Street, Ann Siang Road, Circular Road, Haji Lane, Lembu Road
- Enhancements are under way for a more pedestrian-friendly and connected Civic District





Sustainable Singapore

TOWARDS A

ZERO WASTE NATION

FOOD WASTE

Almost 800,000 tonnes in 2014, only

13% recycled



E-WASTE



RECYCLE material to make new products

AVOID the need to extract raw materials

PROTECT human health and the environment

UPCOMING PILOTS

- On-site recycling at 2 hawker centres, Tiong Bahru and Ang Mo Kio



- Collection from schools, hospitals, army camps, etc, for co-digesting with used water sludge at Ulu Pandan Water Reclamation Plant to produce biogas



GUIDELINES TO BE DEVELOPED



- Good practice guides for food manufacturers and F&B retail outlets
- Food safety guidelines for donating unsold and excess food

- Formed national voluntary partnership to develop and promote more e-waste recycling programmes



- NEA studying more long-term options



RAISING RECYCLING RATES

OVERALL RECYCLING

from **61%** (2013) to **60%** (2014)



TARGET FOR 2030: **70%**

NON-DOMESTIC RECYCLING

from **77%** (2013) to **76%** (2014)



TARGET FOR 2030: **81%**

DOMESTIC RECYCLING

from **20%** (2013) to **19%** (2014)



TARGET FOR 2030: **30%**



Sustainable Singapore

A LEADING

GREEN ECONOMY



GREEN BUILDING MASTERPLAN

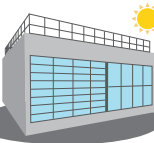
Leading the way for Green Buildings in the tropics and sub-tropics



BCA GREEN MARK

- Proportion of buildings that has achieved BCA Green Mark standards: From **22%** (2013) to about **30%** (2015 as at 30 Sep)

TARGET FOR 2030: 80%



- New BCA Green Mark 2015 certification to further drive sustainable outcomes for Singapore
- Awarded inaugural BCA Green Mark Pearl Prestige Award to City Developments Limited (CDL), City House
- New BCA SkyLab to test and develop energy-efficient building technologies

SOLAR DEPLOYMENT

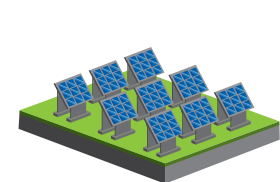
Raising the adoption of solar power

ADOPTION OF SOLAR POWER

- 15.3 MWp** (2013) to **47.2 MWp** (2015 as at 30 Sep)
(MWp: megawatt peak)

PLANNING FOR SOLAR POWER TO CONTRIBUTE **350 MWp** BY 2020

SOLARNOVA PROGRAMME



- Aggregation of solar demand across public agencies

- Called for first solar leasing tender of 40 MWp in June 2015
- Photovoltaic systems to be installed on HDB, MHA and PUB buildings

- Bolster growth of clean energy industry

